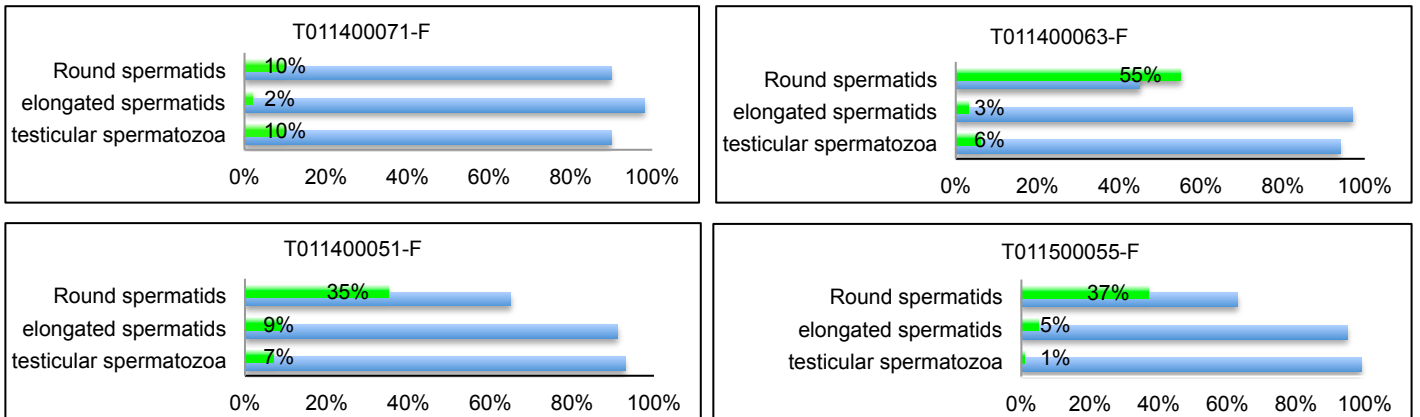
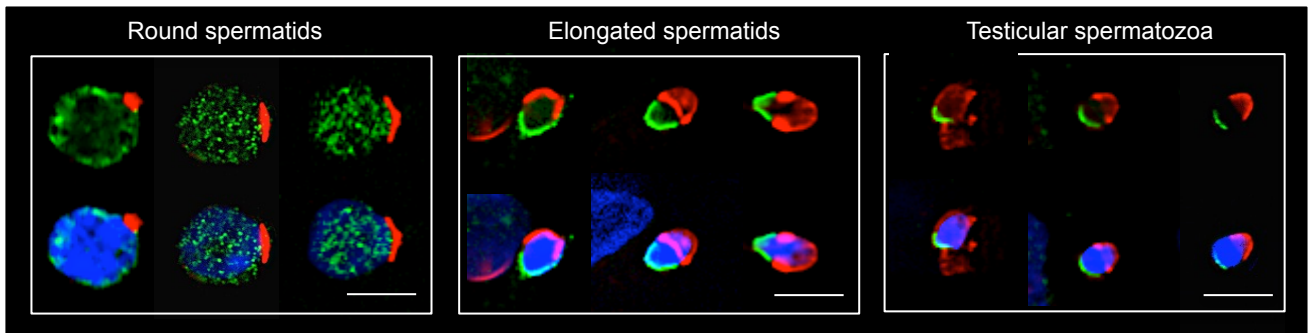


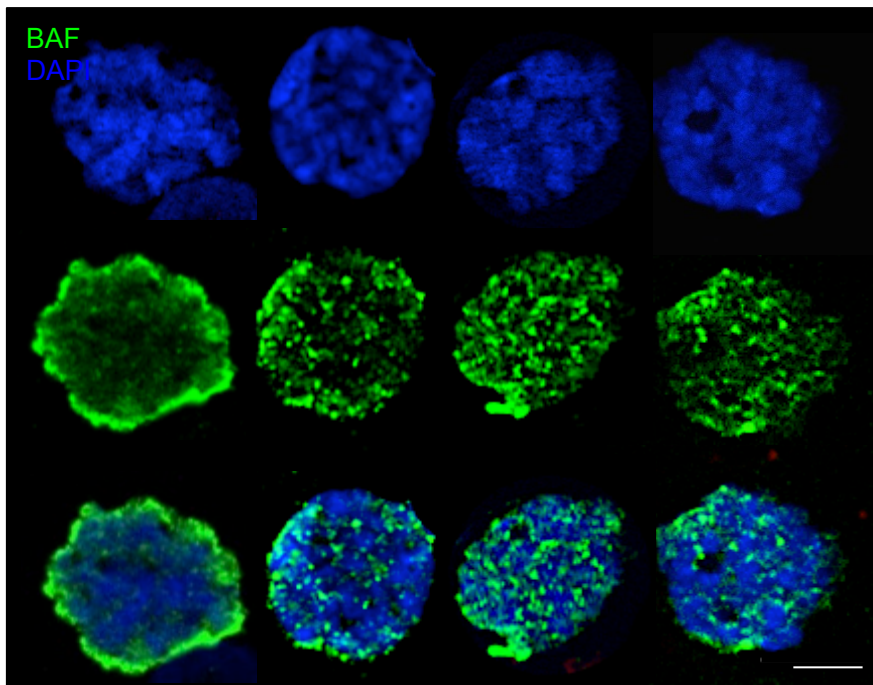
A



B



C



**Figure S7. (A)** Percentages of germ cells labelled with anti-BAF antibody (ab129184) (red) on post-meiotic germ cells of 4 patients (T011400051, T011400063, T011400071 and T011500055). **(B)** Three examples of the labelling on round spermatids, elongating spermatids and testicular spermatozoa with the anti-BAF antibody (green). Nuclei are labelled with DAPI (blue) and acrosomes with lectin (red). **(C)** Immunofluorescent labelling of BAF (green) on a spermatocyte. DNA is counterstained with DAPI (blue). Scale bar is 10  $\mu$ m.